

European Express

13 Days | 9 Countries | 29 Sightseeing & Experiences

INCLUSIONS



Sightseeing



Hotels



Inter-City
Transfer



Meals



Experience
Manager

Advantage



Thoughtfully Curated Itineraries, Highly Rated by our Customers.

Curated Indian Meals with a Taste of Local Cuisine



Most Experienced Tour Managers

Exclusive Experiences & Destinations that only We Offer.

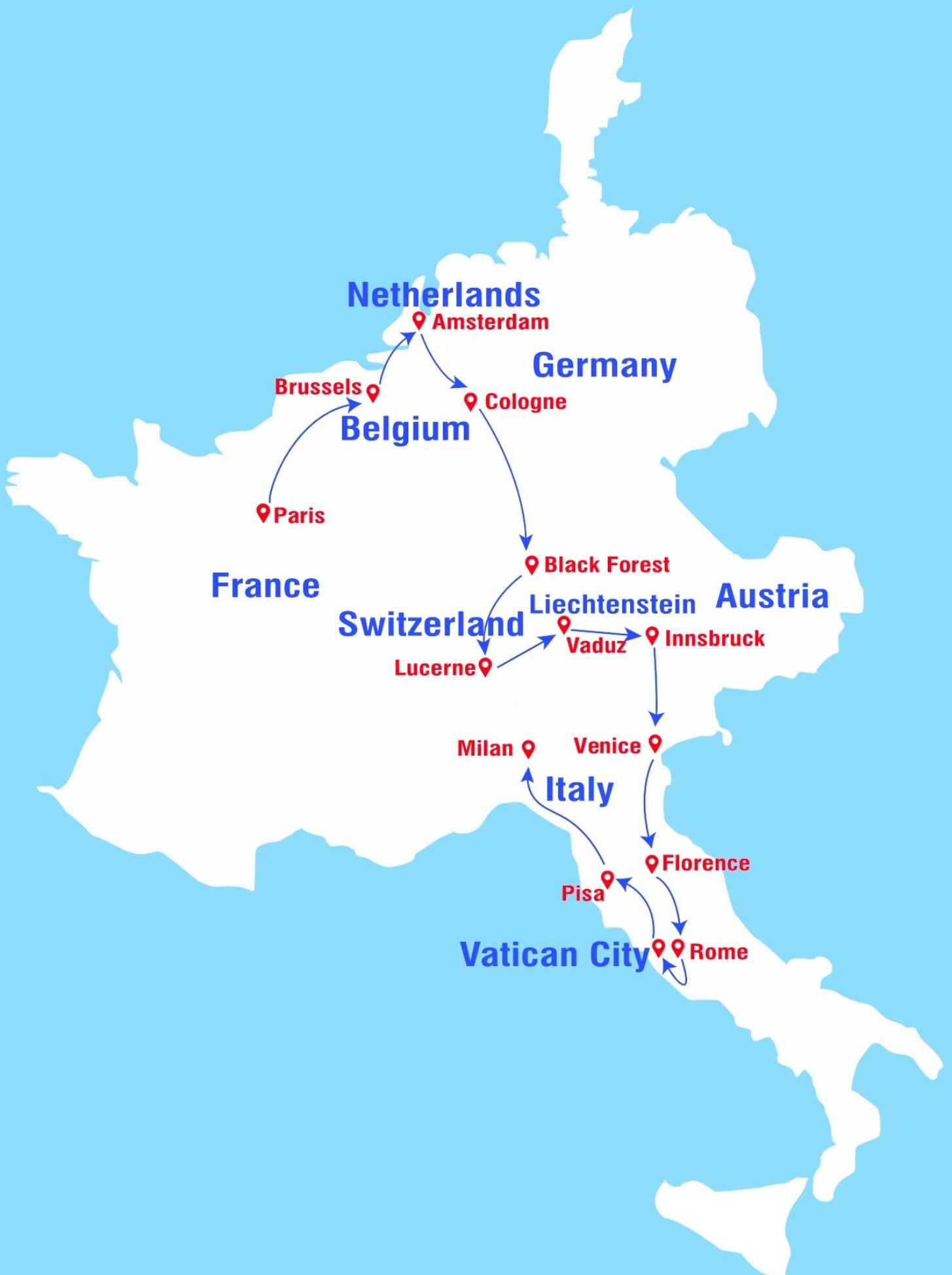


Exclusive Offers on Shopping

Highest rated Holiday Brand



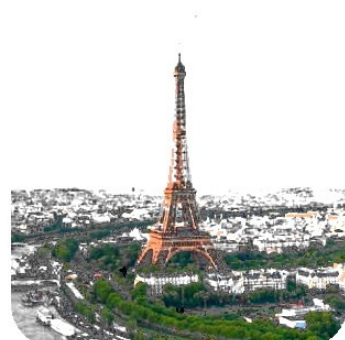
EUROPE TOUR ROUTE



TOUR HIGHLIGHTS

PARIS

- Guided tour of Versailles Palace
- Guided city tour of Paris
- Visit 3rd level of Eiffel Tower
- Seine River cruise
- Illumination tour of Paris



BELGIUM

- Orientation tour of Brussels
- Photo stop at Atomium
- Visit Beer Museum



NETHERLANDS

- Visit Keukenhof (Till 10th May)
- Visit Madurodam (From 11th May)
- Cheese farm and Wooden shoe making
- Amsterdam Canal Cruise



GERMANY

- Visit the Cologne Cathedral
- Enjoy River Rhine cruise
- Visit Black Forest
- Cuckoo clock demonstration



SWITZERLAND

- View the Rhine Falls
- Excursion to Jungfrauoch with lunch and Interlaken
- Visit Mt. Titlis
- Orientation tour of Lucerne
- Lake Lucerne Cruise



LIECHTENSTEIN

- Orientation tour of Vaduz

AUSTRIA

- Visit the Swarovski Crystal Worlds
- Orientation tour of Innsbruck



ITALY VENICE

- Visit St. Mark's square on a private boat
- Orientation tour of Venice

FLORENCE

- Guided walking tour of Florence



ROME

- Guided city tour of Rome

VATICAN CITY

- Visit the St. Peter's Basilica and Square

PISA

- Visit the Field of Miracles – See the Leaning Tower of Pisa



Inclusions

ACCOMMODATION



- 02 nights at Holiday Inn Express / City Residence or similar in Paris (CDG Area), **France**.
- 02 nights at Hotel NH / Best Western or similar in Eindhoven, **Netherlands**.
- 01 night at Holiday Inn Express / Best Western Morfeldon / Achat or similar in Rhineland, **Germany**.
- 03 nights at Terrace / Central / HI Express Neuenkirch / Prizeotel or similar in **Central Switzerland**.
- 01 night at Wald / Lizumerhof / Alpenkoning or similar in Seefeld / Innsbruck, **Austria**.
- 01 night at Four points / Unaway / SHG or similar in Padova / Occhiobello / Bologna, **Italy**.
- 02 nights at Fortuna / Grand Fonti / Planet or similar in Chianciano Terme/ Arezzo, **Italy**.

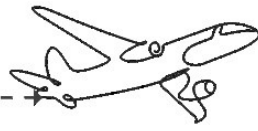


MEALS

- Daily continental buffet breakfast (Breakfast includes bread, butter, jam, cereals, fruit juice, milk, coffee, hot eggs and cut fruits).
- 10 Indian Jain / vegetarian / non vegetarian lunches.
- 01 Local lunch.
- 12 Indian Jain /vegetarian / non-vegetarian dinners.

Note: Packed lunches, if applicable, will be Jain / vegetarian. In certain places, there is a possibility of providing cash out to the passengers instead of packed lunches.

YOUR ITINERARY



Day 1

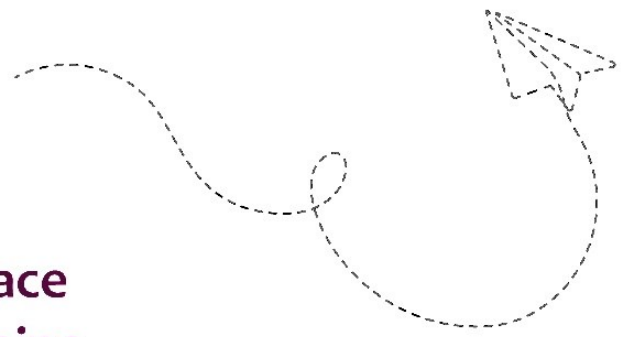


Welcome to Paris!

On arrival, our Tour Manager / Local Representative will meet and welcome you outside the Airport. Later, we proceed to the hotel and check-in..

Overnight in Paris (CDG Area), France. (D)

Note: Joining direct passenger / NRI can check-in on your own at the hotel. The standard check-in time is 1500 hrs. We may have to proceed directly for dinner or Packed dinner will be provided in case of late arrivals of flight or long queue at the immigration.



Guided tour of Versailles Palace - Guided city tour of Paris - Seine River Cruise – Eiffel Tower Level 3 – Illumination tour of Paris

Today, proceed for a Guided Tour of Versailles Palace with private apartments, Opera Hall, the Chapel & Hall of Mirrors. Next, we proceed for a guided city tour of Paris: See the Alexander Bridge, Arc de Triomphe, Concorde Square, Opera House, Invalides and Champs Elysees. Later we take a Scenic Cruise on River Seine. Next, we visit the Eiffel Tower 3rd level. In the evening enjoy “Illumination Tour of Paris” and see Paris by night, with some of the city’s famous monuments / sights lit up.

Overnight in Paris (CDG Area), France . (B, L, D)

Day 2



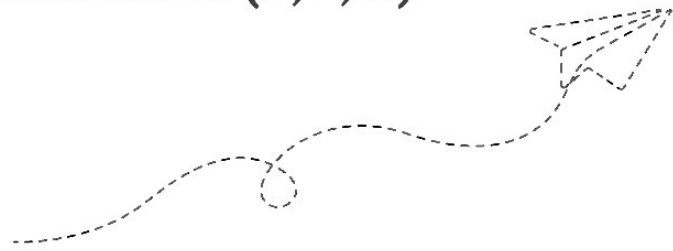
Note: • Visiting Eiffel Tower 3rd Level is subject to availability due to weather conditions / temporary operational closures. In case of such, the group shall visit the Eiffel Tower up till 2nd Level. • Due to stringent security checks at the Eiffel Tower, it may take up to 4 – 5 hours in the queue.

**Orientation Tour of Brussels
– Visit Beer Museum – Photo
stop at Atomium**

Today we check out and drive towards Brussels. On arrival, enjoy an Orientation Tour of Brussels: See the Grand Place with some free time near Manneken Pis. Next, we visit the Beer Museum with beer tasting. Later, we take a photo stop at Atomium.

**Overnight in Eindhoven,
Netherlands. (B, L, D)**

Day 3



Day 4



**Till 10th May: Keukenhof –
Cheese Farm and Wooden
Shoe Making – Amsterdam
canal cruise**

Today, we proceed to Keukenhof – the largest spring garden in the world. Next, we get to experience Wooden shoe making and Cheese Farms. Later, enjoy a cruise on the canals of Amsterdam in a glass-topped boat.

**Overnight in Eindhoven,
Netherlands. (B, L, D)**

OR

**From 11th May: Madurodam – Cheese Farm and Wooden
Shoe Making – Amsterdam canal cruise**

Today, we proceed to Madurodam: Holland in Miniature. Next, we get to experience Wooden shoe making and Cheese Farms. Later, enjoy a cruise on the canals of Amsterdam in a glass-topped boat. .

Overnight in Eindhoven, Netherlands. (B, L, D)

Day 5



Cologne Cathedral – Rhine River cruise

Today, we drive to Cologne and visit the Cologne Cathedral, which is the largest Gothic church in northern Europe and features immense twin towers that stand 515 feet (157 metres) tall. Later, we enjoy a scenic cruise on the River Rhine. .

Overnight in Germany. (B, PL, D)



Day 6

Visit Black Forest – Cuckoo Clock Demonstration – View Rhine Falls

Today, we drive in the heart of the Black Forest region, known for its dense, evergreen forests and picturesque villages. Here, we also get to see how the famous Cuckoo Clocks are made. Next, we drive to Schaffhausen in Switzerland to see the Rhine falls. .

Overnight in Zurich/ Basel, Switzerland. (B, L, D)





Day 7

Excursion to Jungfrauoch with lunch and Interlaken

Today, we proceed for an excursion to Jungfrauoch - The Top of Europe. We board the cable car followed by a cogwheel train up to a height of 3,454 meters to Europe's highest railway station. Visit the Ice Palace and the Sphinx observatory deck to view the longest glacier in the Alps. Later, we visit Interlaken.

Overnight in Zurich/ Basel, Switzerland. (B, L, D)

Visit Mt. Titlis – Orientation tour of Lucerne – Lake Lucerne Cruise

Today, we visit Mt Titlis. Our cable car ride includes the world's first rotating cable car, the Rotair – to the top of Mt. Titlis at 3,020 meters. Do visit the “Cliff Walk” a suspension bridge along the cliff of Mt. Titlis. Next, we proceed for an orientation tour of Lucerne: See the Lion Monument and Kapellbrücke with some free time to shop for famous Swiss watches, knives and chocolates. Later we take a scenic cruise on Lake Lucerne..

Overnight in Zurich/ Basel, Switzerland. (B, L, D)

Day 8



Day 9

Orientation tour of Vaduz – Swarovski Crystal Worlds – Orientation tour of Innsbruck

Today, we drive to Innsbruck. En route, visit Vaduz, the capital of Liechtenstein. Here, we enjoy an orientation tour of Vaduz. Here you get some free time to shop at the Huber watch store. Next, we visit the Swarovski Crystal Worlds in Wattens. Later, proceed for an orientation tour of Innsbruck: See the Golden Roof and the Maria Theresien Strasse.

***Overnight in Innsbruck / Seefeld,
Austria. (B, L, D)***



Day 10

Private boat to St. Mark's Square – Orientation tour of Venice

Today, we drive to Italy and proceed to the pier to take a private boat to Venice. On arrival, we visit St. Mark's square to see the Basilica, Doge's Palace, Campanile and Bridge of Sighs.

Overnight in Padova / Occhiobello / Bologna, Italy. (B, L, D)

Day 11



Guided walking tour of Florence

Today, we proceed to Florence for a guided walking tour: see the Duomo, the Campanile, the Baptistery with its Gates of Paradise and Piazza Della Signoria.

Overnight in Arezzo / Chianciano Terme, Italy. (B, LL, D)



Day trip to Rome: Guided tour of Rome and Vatican City

Today we go on a day trip to Rome and Vatican City. On arrival, we proceed for a guided city tour of Vatican City: the smallest country in the world (shorts or sleeveless vests not allowed), where we visit the famous St. Peter's Basilica and St. Peter's Square. Next, we continue for a guided city tour of Rome: See Circus Maximus and photo-stop at Colosseum & Arc of Constantine.

Overnight in Arezzo / Chianciano Terme, Italy . (B, L, D)

Day 12



Day 13



See Leaning Tower of Pisa - Fly back home with pleasant memories!

Today, we proceed to Pisa to see the world-famous leaning tower of Pisa. Later, we drive to Milan airport for your flight back home. Kindly spare a few minutes to share your feedback with your Tour Manager. Your valued suggestions will be most appreciated. Arrive home with pleasant memories of your Europe tour, which we are sure you will treasure for a lifetime. (B)

Note: • Due to flight connectivity, few groups may depart out of Rome instead of Milan. Kindly check with your sales staff for your exact flight details. • In major European cities, there are parking restrictions for coaches, and it is not possible to stop at all the places during the city tour. Your Tour Manager will try his/her best to stop coach wherever possible for a photo stop. • Arrival / Departure Transfers will be provided subject to minimum 4 passengers travelling together.

DEPARTURE DATES

March'26	27
April'26	10, 17, 24, 28
May'26	1, 5, 8, 12, 15, 19, 22, 26, 29
June'26	2, 5, 9, 12, 16, 19, 23, 26
July'26	3, 10, 17, 24, 31
August'26	7, 18, 21, 28
September'26	11, 18, 25

13 Days - European Express (Tour Price per person)

Twin/ Triple	Child with Bed	Child No Bed	Infant
USD 4,330	USD 2,860	USD 2,545	0

Single room supplement USD 1,175 per person. *As a 3rd in a triple, a roll away cot may be provided. **As a 3rd in a double, no bed or cot will be provided to the child. Person below 12 years will be considered as a Child. • Maximum 3 persons are allowed per room.

What Your Tour Price Includes

- Sightseeing and accommodation as per the above-mentioned itinerary.
- All transfers and extensive excursions with entrance fees (as specified in the itinerary) by a deluxe air-conditioned coach.
- Services of a professional, friendly and multilingual Tour Manager or a local Representative. (Subject to minimum 15 customers)..

What Your Tour Price Does Not Include

- Air tickets required to participate in this tour.
- Visa charges, Insurance, Airport & Port taxes.
- Tipping is expected from anyone providing your service e.g., Coach Driver, Local Guides, Hotel & Restaurant staff etc. It is mandatory to tip a nominal amount of EUR 3 per person/per day. For the entire duration of this tour, which is 13 Days, the total Tips amount is EUR 39 per person to be paid to the Tour Manager on Day 01 of the tour.
- No portage included.
- Any expenses of a personal nature such as portage, laundry expenses, wines,

mineral water, food and drink not in the regular menu provided by us, minibar, telephone calls, etc.

- Meals other than that are mentioned in your itinerary.
- Cost of excursions, city sightseeing, entrance fees and local guides availed of by the passengers, other than that mentioned in your itinerary.
- Airport transfers, Cost of Suggested / Optional Excursions..

Visa Requirements

- You must be in possession of a Multiple entry Schengen Visa. The cost of visa is not included in your package tour price. It would be best to check with your travel agent and the consulates nearest to you for advice and information. Please ensure that your travel documents are ready in time for departure.

Ticketing Requirements

- For this tour you would require confirmed air tickets to arrive into Paris and depart from Milan Airport. It would be advisable to check with your sales officer or local travel agent for ticketing.

IMPORTANT NOTES

Joining Direct Clients

- Main Sector air tickets to reach the first overnight city and last departure city is not included in the Joining Direct package price.
- Arrival and Departure Transfers are not included in the package price.
- The Tour Manager shall meet the clients directly at the hotel.

Hotels

- All hotels will be either around the airport area or on the outskirts.
- The hotel room size in Europe would be up to 16 – 18 sq. mts.
- Most hotels in Europe have only Twin beds. The double bed will be Queen size and not King size.
- As a 3rd person in a triple room, most hotels use rollaway beds and room size may be the same as the double room.
- For Child with bed: At times hotel don't have enough roll away beds, in that case they might give a double and a separate single room.
- A person 11.99 years and below is considered a child and 12 years and above, an adult.
- Hotel rooms may not be air conditioned / air cooled nor will fans be provided. Air conditioning / cooling in hotels are set as per European weather conditions.
- Functioning of Air cooling / Air conditioning in hotels is subject to official declaration of summer by the local authority.
- During heat wave in Europe air conditioning of the hotels and coaches may cease to function as they are not built for such high temperatures.
- Most hotels in Europe do not provide tea kettles in the rooms.
- Due to international events and trade fairs all throughout Europe such as the Air Show, music festivals, ice skating championships etc., you may have to stay in hotels further away from the city.
- In Switzerland the stay may be split in two hotels.
- Any damage caused to the hotel rooms / Coach during your stay shall be payable by the passengers.
- We also reserve the right to substitute a hotel of similar class if it is deemed advisable or necessary.
- In certain cities hotels have not started the buffet breakfasts yet and if the same does not change by the time the tours begin, we will either provide breakfast or the groups will be taken to an Indian / local restaurant for breakfast.

Coaches

- Most of your journey in Europe is by coach and hence you are requested to keep the coach clean.
- Due to hygienic reasons, it is not permitted to use toilets on the coach. However, the tour manager will make comfort stops during long drives.
- Eating & drinking is not permitted on the coach.
- One check-in bag and one handbag per person only, due to limited boot space on the coach.
- In major European cities, there are parking restrictions for coaches, and it may not be possible to stop at all the places during the city tour. Tour Manager will try his/her best to stop coach wherever possible for a photo stop.
- Coaches are non-wheelchair compliant. There are steps to board / alight from the coach.
- Due to private coaches being forbidden inside most of the European cities, as

per EU norms to preserve them and to avoid getting them polluted and overcrowded, most of your sightseeing will be done by local buses and on foot.

Meals

- Meals are pre-set and a-la carte is not possible.
- On certain days, a packed lunch will be provided.

Sightseeing

- On certain departures, we may sometimes amend/reverse the itinerary. However, all the services / inclusions will remain the same.
- Generally, you will have to walk to sightseeing places, amusement parks and the airports sometimes for a long distance; however, the same will be timely instructed by the Tour Manager. It is advisable to carry a good pair of comfortable sports shoes. The tour manager and the driver will do their best to get you as close to the monuments as possible.

General

- On some occasions you may have to join another group in case the group does not have adequate members.
- A local representative or a driver may only be there to assist you during your initial part of the tour.
- Arrival and Departure flights should be booked according to the group flight timings. In case there is any sightseeing involved on the first or last day of the itinerary to avoid missing any of the services. Please check with your sales officer for the group flight timings.
- Security alerts and random closures might affect the itinerary.
- Please take extra care of your personal belongings while on the tour, every country you travel to is prone to thefts and bag snatching. TCIL will not be liable for any loss of belongings / baggage.
- Disabled clients should carry their own wheelchair and should be accompanied by a qualified companion who is able to provide assistance to the disabled client.
- TCIL shall not accept any liability or responsibility for any damages, loss, baggage loss, theft, injury, accident, death, breakdown or irregularity, which may occur in carrying out the tour arrangement, weather conditions, strikes, war, quarantine and any other cause whatsoever and all such loss or expense must be borne by the passengers. Insurance policies must be carried while on tour.
- The management reserves the right to claim any additional expenses incurred due to delays or changes in schedules of train, airplane, bus, ship or other services.
- The Tour Manager and the company reserves the right to amend the itinerary, alter, vary or withdraw any particular departure, excursion advertised. For the convenience of our passengers, we will sometimes amend the itinerary. However, all the services will remain the same.
- There are no refunds for any services i.e., meals, sightseeing etc. not utilized on your tour.
- All optional activities will have to be booked and paid to the Tour Manager on Day 01 of the tour. Payments to be made by cash in EURO only. (Credit or Debit cards not accepted).
- Optional tours are booked & paid on 100% non-refundable & non cancellation policy.
- The images used in this brochure are for representation purposes only.
- Please refer to the Booking Form for detailed "Terms and Conditions".