



Super Budget Tour of Europe

11 Days | 6 Countries | 15 Sightseeing & Experiences

INCLUSIONS



Sightseeing



Hotels



Inter-City
Transfer



Meals



Experience
Manager

Advantage



Thoughtfully Curated Itineraries, Highly Rated by our Customers.

Curated Indian Meals with a Taste of Local Cuisine



Most Experienced Tour Managers

Exclusive Experiences & Destinations that only We Offer.



Exclusive Offers on Shopping

Highest rated Holiday Brand



EUROPE TOUR ROUTE



United Kingdom

London

Netherlands

Belgium

Germany

Paris

France

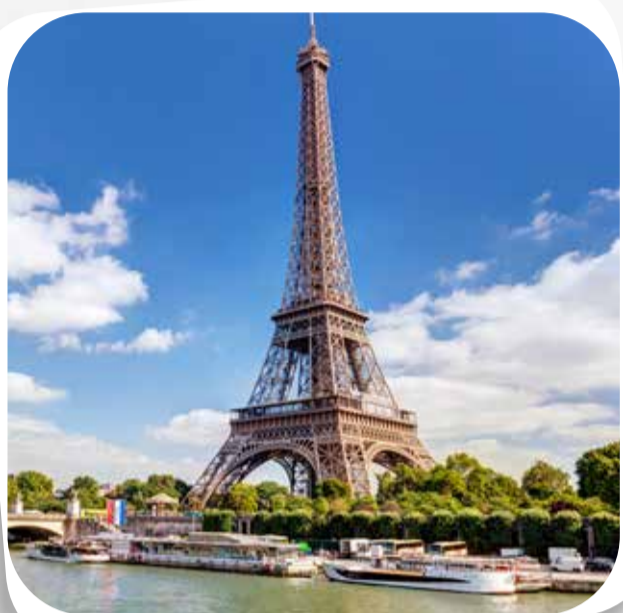
Switzerland



TOUR HIGHLIGHTS

UNITED KINGDOM

- Guided City Tour of London
- Ride on the London Eye
- Visit Madame Tussauds Wax Museum



FRANCE

- Guided city tour of Paris
- Visit 2nd level of Eiffel Tower
- Visit Fragonard: French Perfume Museum
- Seine River Cruise and Illumination Tour of Paris (**Optional**)



SWITZERLAND

- View the Rhine Falls
- Chance to visit Jungfrauoch with lunch and Interlaken (**Optional**)
- Visit Mt. Titlis
- Orientation tour of Lucerne



GERMANY

- Enjoy Rhine River Cruise
- Orientation tour of Heidelberg
- Visit the Black Forest



BELGIUM

- Orientation tour of Brussels
- Photo stop at Atomium



NETHERLANDS

- Visit Keukenhof (Till 10th May)
- Visit Madurodam (From 11th May)
- Visit Wooden Shoe and Cheese Factory

Inclusions

ACCOMMODATION



- 02 nights at Hotel Holiday Inn express / Ibis LHR or similar in London (LHR Area), **United Kingdom**.
- 02 nights at Hotel Moxy CDG / ACE / Ibis CDG or similar in Paris (CDG Area), **France**.
- 03 nights at Hotel Ibis Zurich Messe Airport / BB Oftringen / HI Express Neuenkirch or similar in Zurich, **Switzerland**.
- 01 night at Hotel Holiday Inn Express / Achat / Ibis or similar in Rhineland, **Germany**.
- 01 night at Hotel Ramada Brussels Woulwe / Best Western or similar in Brussels, **Belgium**.
- 01 night at Ibis or similar in Amsterdam (Airport area), **Netherlands**.

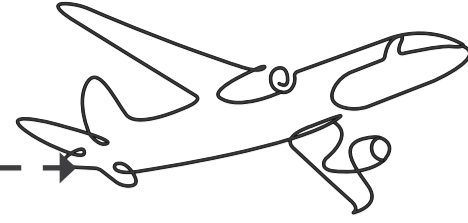


MEALS

- Daily Continental Breakfast (Breakfast includes Bread, Butter, Jam, Cereals, Juice, Milk & Coffee)
- 10 Indian Jain / Vegetarian / Non-Vegetarian Dinners.

Note: Packed lunches, if applicable, will be Jain / vegetarian. In certain places, there is a possibility of providing cash out to the passengers instead of packed lunches.

YOUR ITINERARY



Day 1

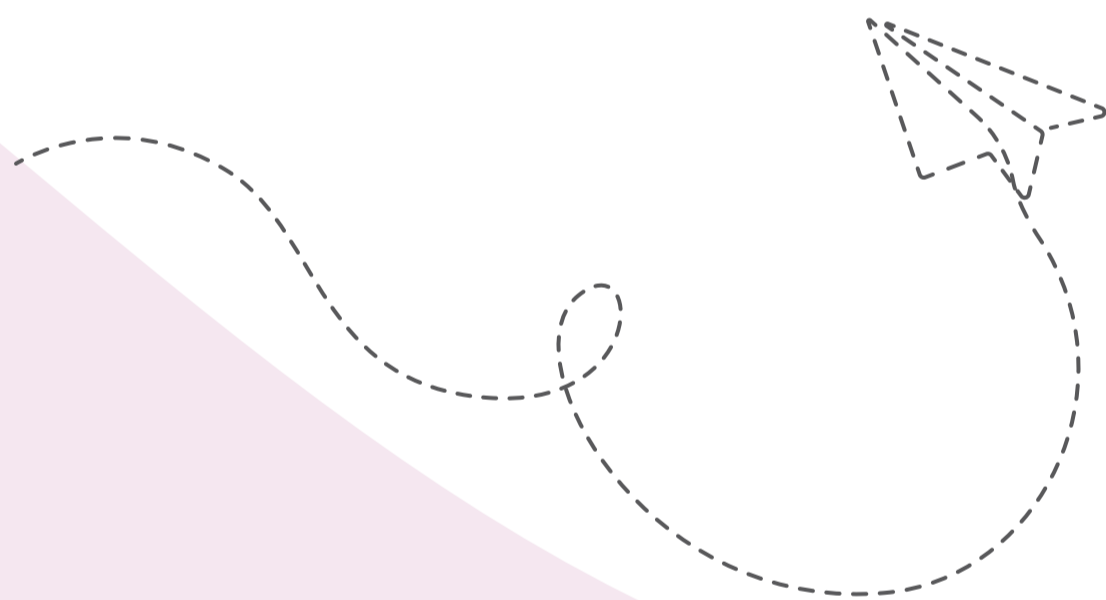


Welcome to London!

On arrival, our Tour Manager / Local Representative will meet and welcome you outside London Airport. Later, we proceed to the hotel and check-in.

Overnight in London (LHR Area), United Kingdom. (D)

Note: • *Joining direct passenger / NRI can check-in on your own at the hotel. The standard check-in time is 1500 hrs. We may have to proceed directly for dinner or packed dinner will be provided in case of late arrivals of flight or long queue at the immigration.*



Guided City Tour – Madame Tussauds Wax Museum – Ride on the London Eye

Today, we proceed on a guided City Tour of London: See the Buckingham Palace, Hyde Park, Big Ben, Westminster Abbey, Houses of Parliament, Trafalgar Square, Tower Bridge and Thames River. Next, we visit the famous Madame Tussauds Wax Museum. Later, enjoy a ride on the London Eye.

Overnight in London (LHR Area), United Kingdom. (B, D)

Day 2



Day 3

Le shuttle / Ferry to Paris

Today, we proceed to Calais by the Le Shuttle / Ferry and onwards drive to Paris. .

Overnight in Paris (CDG Area), France. (B, D)

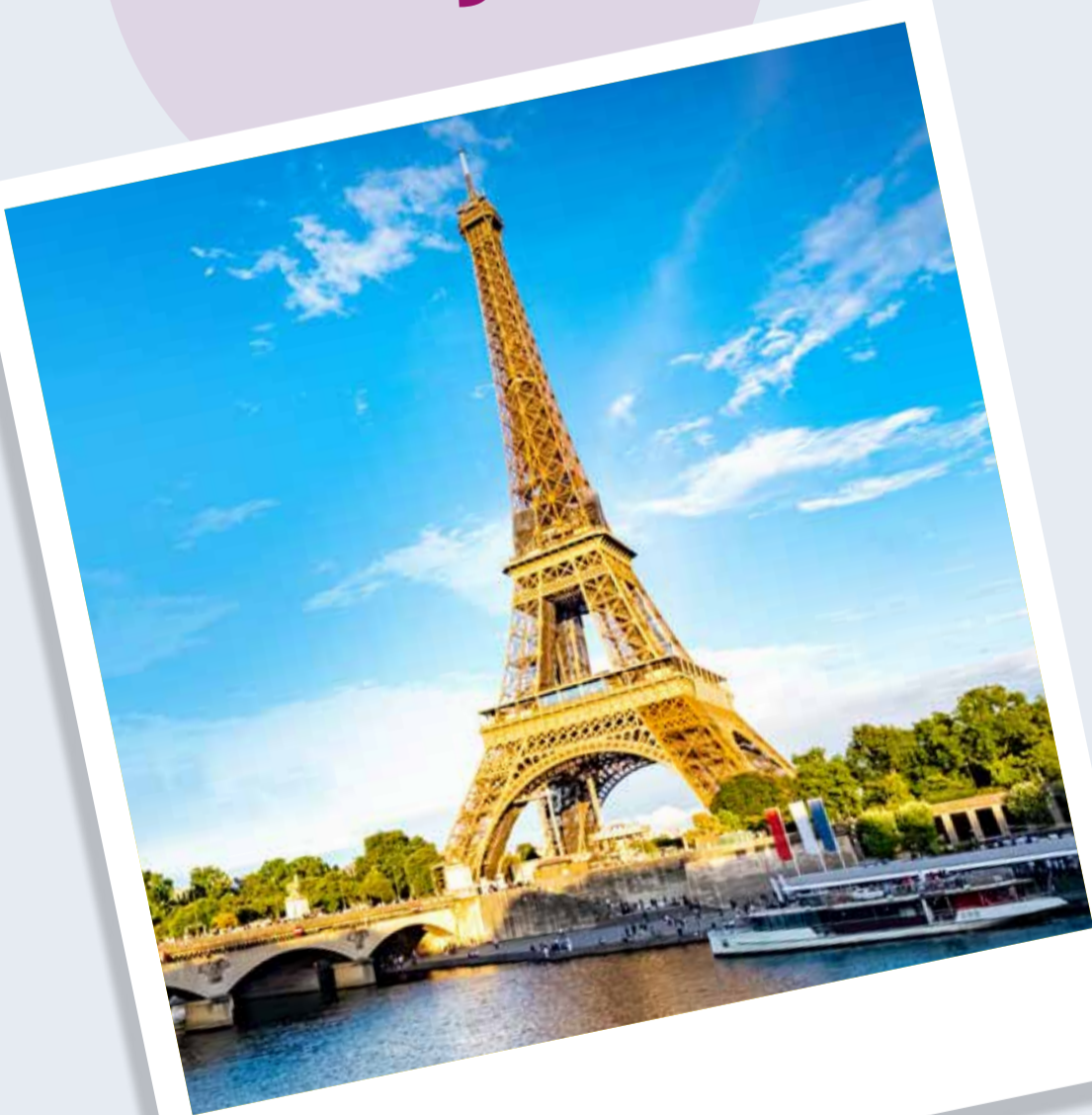


Eiffel Tower (2nd Level) – Guided City Tour of Paris – Visit Fragonard - Illumination Tour on Seine River Cruise (Optional)

Today, we visit the Eiffel Tower (2nd level). Then proceed for a Guided City Tour: See the Alexander Bridge, Arc de Triumph, Concorde Square, Opera House, Invalides, Champs Elysees and much more. Then we visit the Famous French perfume museum – Fragonard. Later, you have a chance to enjoy a cruise on the Seine River along with an ‘Illumination Tour of Paris’ and see Paris by night, with some of the City’s famous monuments / sights lit up (Optional).

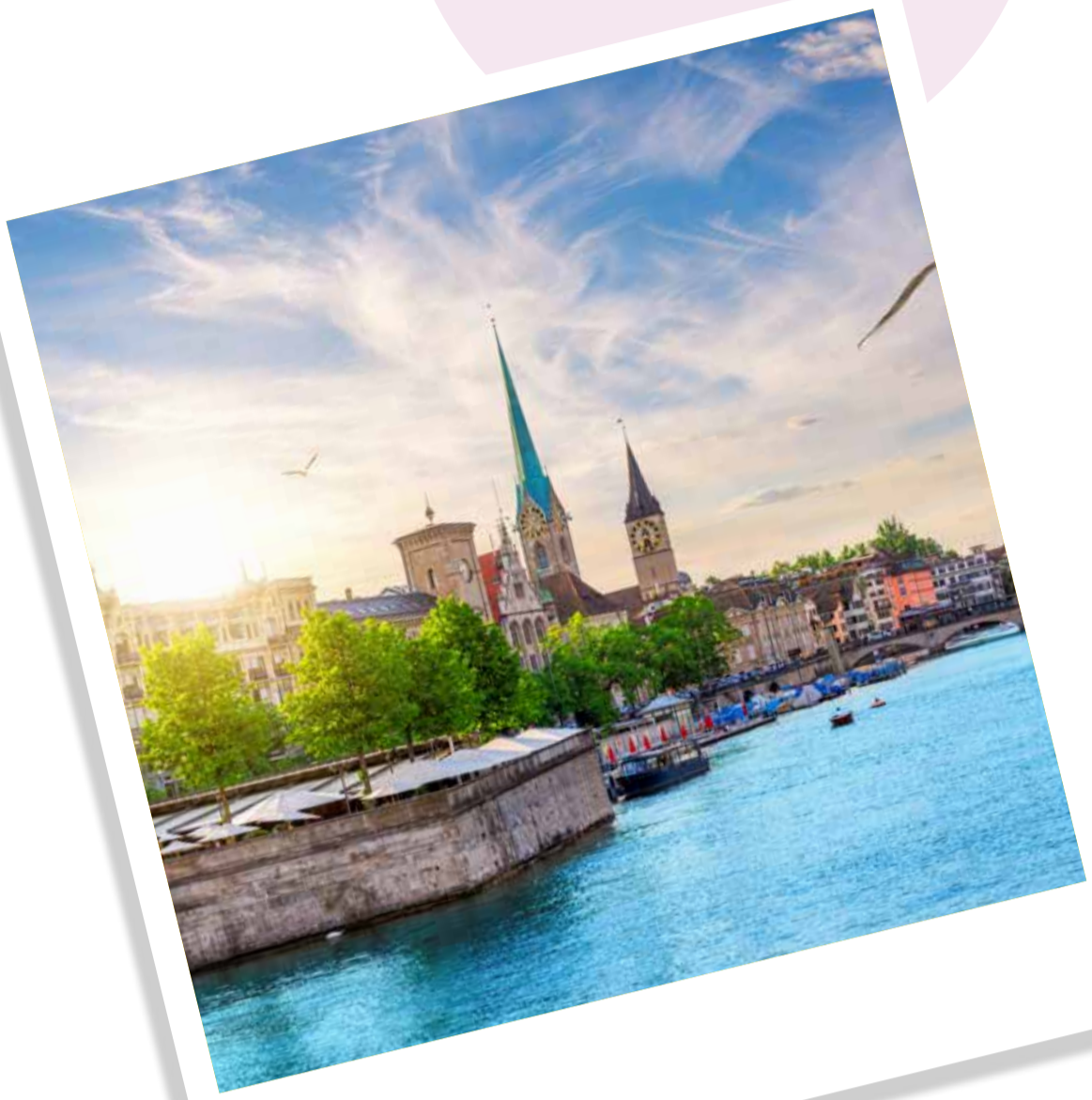
Overnight Paris (CDG Area), France. (B, D)

Day 4



Note: Due to stringent security checks at the Eiffel Tower, it may take up to 4 – 5 hours in the queue.

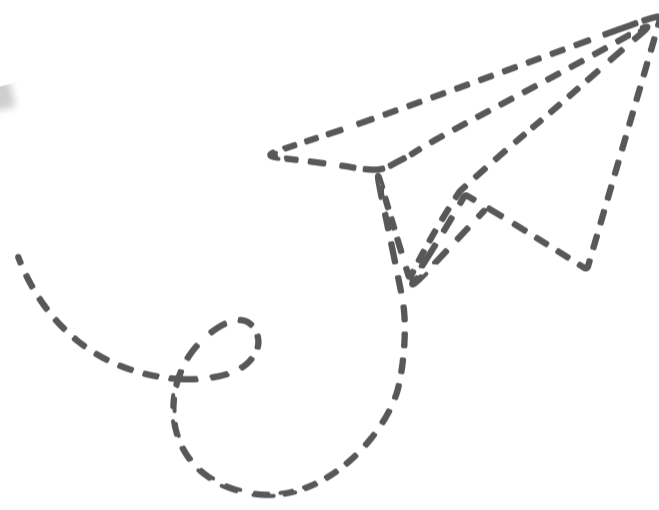
Day 5



Onto Switzerland

Today we take a Scenic drive to Switzerland.

Overnight in Zurich, Switzerland. (B, D)



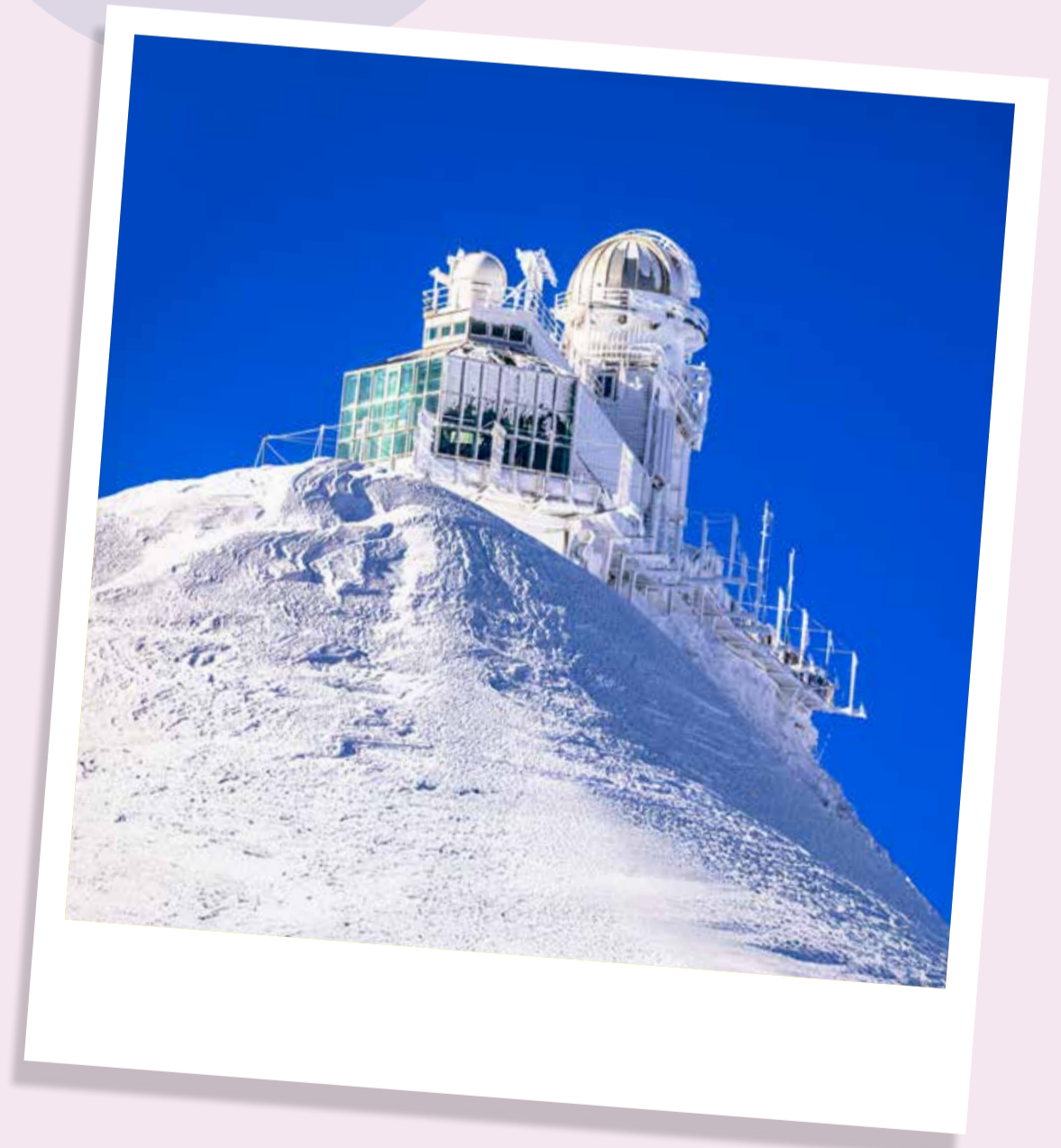
Day at leisure OR Chance to visit Jungfrauoch with lunch and Interlaken (Optional)

Today, the day is at leisure OR you can join us for a visit to Jungfrauoch - The Top of Europe. We take the cable car followed by a cogwheel train up to a height of 3,454 meters to Europe's highest railway station. Visit the Ice Palace and the Sphinx observatory deck to view the longest glacier in the Alps. Later, we visit Interlaken.

Overnight in Zurich, Switzerland. (B, D)

Note: Guests who do not opt for this optional excursion will get packed dinner delivered at the hotel when the group arrives.

Day 6



Visit Mt. Titlis – Orientation tour of Lucerne

Today, we proceed to Mt Titlis where you will take cable car rides including the world's first rotating cable car, the Rotair – to the top of Mt. Titlis at 3,020 meters. Do visit the “Cliff Walk” - a suspension bridge along the cliff of Mt. Titlis.” Next, we drive to Lucerne for an orientation tour: See the Lion Monument and Kapellbrucke. Also, enjoy some free time to explore the town and shop for Swiss knives, chocolates and souvenirs.

Day 7



Overnight in Zurich, Switzerland. (B, D)



Day 8

View the Rhine falls - Black Forest – Orientation Tour of Heidelberg

Today, we drive to Schaffhausen, to see the magnificent Rhine Falls. Next, we visit the heart of Black Forest, famous for its beautifully dense, evergreen forests and picturesque villages. Later, we proceed for an Orientation Tour of Heidelberg.

Overnight in Germany. (B, D)

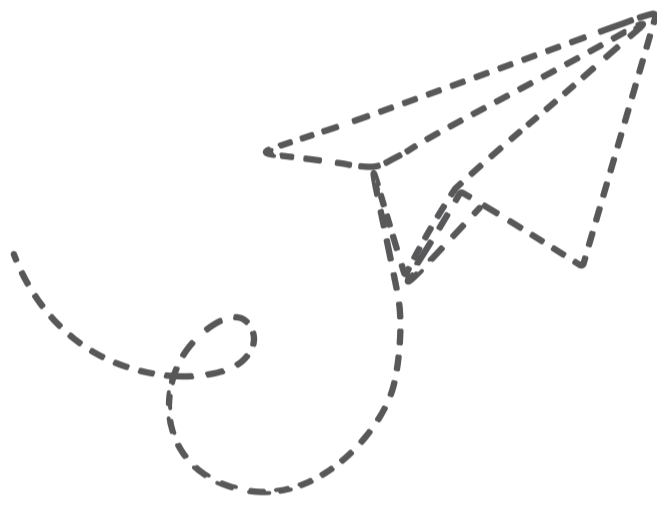
Day 9



Rhine River cruise – Orientation tour of Brussels – Photo stop at Atomium

Today, enjoy a scenic Cruise on the River Rhine. Next, we proceed for an orientation tour of Brussels: See the Grand Place with a photo stop at Atomium.

***Overnight in Brussels, Belgium.
(B, D)***



Day 10

Till 10th May: Keukenhof – Visit Cheese Farm and Wooden Shoe Factory

Today, we proceed to Keukenhof – the largest spring garden in the world. Next, we experience Wooden shoe making and Cheese Farms. Later, we have some free time at Dam Square.

***Overnight in Amsterdam,
Netherlands. (B, D)***

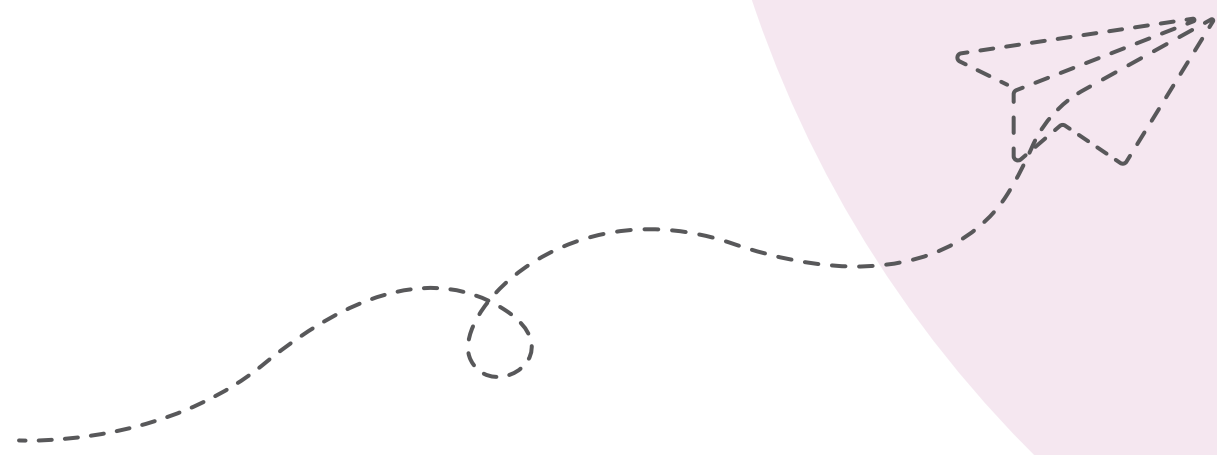
OR

From 11th May: Madurodam – Visit Cheese Farm and Wooden Shoe Factory

Today, we proceed to Madurodam: Holland in Miniature. Next, we experience Wooden shoe making and Cheese Farms. Later, we have some free time at Dam Square. .

Overnight in Amsterdam, Netherlands. (B, D)





Day 11

Fly back home with Pleasant Memories!

Today, we proceed to Amsterdam Airport for your flight back home. Kindly spare a few minutes to share your feedback with your Tour Manager. Your valued suggestions will be most appreciated. Arrive home with pleasant memories of your Europe tour, which we are sure you will treasure for a lifetime. **(B)**



Note:

- *In major European cities, there are parking restrictions for coaches, and it is not possible to stop at all the places during the city tour. Your Tour Manager will try his/her best to stop coach wherever possible for a photo stop.*
- *Arrival / Departure Transfers will be provided subject to minimum 4 passengers travelling together.*

DEPARTURE DATES

April'26	25
May'26	9, 23, 30
June'26	6, 13, 27
July'26	11, 25
August'26	8, 22
September'26	19

OPTIONAL TOUR

OPTIONAL TOUR	ADULT (EUR)	ADULT (EUR)
Visit Jungfrauoch with lunch and Interlaken	180	130
Illumination tour of Paris with Seine River cruise	50	50

Note: Optional will be operated subject to minimum strength of 20 passengers.

11 Days - Super Budget Tour of Europe (Tour Price per person)

Twin/ Triple	Child with Bed	Child No Bed	Infant
USD 2,640	USD 1,930	USD 1,755	0

Single room supplement USD 895 per person. *As a 3rd in a triple, a roll away cot may be provided. **As a 3rd in a double, no bed or cot will be provided to the child. Person below 12 years will be considered as a Child. • Maximum 3 persons are allowed per room.

What Your Tour Price Includes

- Sightseeing and accommodation as per the above-mentioned itinerary.
- All transfers and extensive excursions with entrance fees (as specified in the itinerary) by a deluxe air-conditioned coach.
- Services of a professional, friendly and multilingual Tour Manager or a local Representative. (Subject to minimum 15 customers).
- mineral water, food and drink not in the regular menu provided by us, minibar, telephone calls, etc.
- Meals other than that are mentioned in your itinerary.
- Cost of excursions, city sightseeing, entrance fees and local guides availed of by the passengers, other than that mentioned in your itinerary.
- Airport transfers, Cost of Suggested / Optional Excursions.

What Your Tour Price Does Not Include

- Air tickets required to participate in this tour.
- Visa charges, Insurance, Airport & Port taxes.
- Tipping is expected from anyone providing your service e.g., Coach Driver, Local Guides, Hotel & Restaurant staff etc. It is mandatory to tip a nominal amount of EUR 3 per person/per day. For the entire duration of this tour, which is 11 Days, the total Tips amount is EUR 33 per person to be paid to the Tour Manager on Day 01 of the tour.
- No portage included.
- Any expenses of a personal nature such as portage, laundry expenses, wines,

Visa Requirements

- You must be in possession of a Multiple Entry Schengen visa & UK visa. The cost of visa is not included in your package tour price. It would be best to check with nearest consulates or embassy or your travel agent for visa information. Please ensure that your travel documents are ready in time before your tour date.

Ticketing Requirements

- For this tour you would require confirmed air tickets to arrive into London and depart from Amsterdam. It would be advisable to check with your sales officer or local travel agent for ticketing.

IMPORTANT NOTES

Joining Direct Clients

- Main Sector air tickets to reach the first overnight city and last departure city is not included in the Joining Direct package price.
- Arrival and Departure Transfers are not included in the package price.
- The Tour Manager shall meet the clients directly at the hotel.

Hotels

- All hotels will be either around the airport area or on the outskirts.
- The hotel room size in Europe would be up to 16 – 18 sq. mts.
- Most hotels in Europe have only Twin beds. The double bed will be Queen size and not King size.
- As a 3rd person in a triple room, most hotels use rollaway beds and room size may be the same as the double room.
- For Child with bed: At times hotel don't have enough roll away beds, in that case they might give a double and a separate single room.
- A person 11.99 years and below is considered a child and 12 years and above, an adult.
- Hotel rooms may not be air conditioned / air cooled nor will fans be provided. Air conditioning / cooling in hotels are set as per European weather conditions.
- Functioning of Air cooling / Air conditioning in hotels is subject to official declaration of summer by the local authority.
- During heat wave in Europe air conditioning of the hotels and coaches may cease to function as they are not built for such high temperatures.
- Most hotels in Europe do not provide tea kettles in the rooms.
- Due to international events and trade fairs all throughout Europe such as the Air Show, music festivals, ice skating championships etc., you may have to stay in hotels further away from the city.
- In Switzerland the stay may be split in two hotels.
- Any damage caused to the hotel rooms / Coach during your stay shall be payable by the passengers.
- We also reserve the right to substitute a hotel of similar class if it is deemed advisable or necessary.
- In certain cities hotels have not started the buffet breakfasts yet and if the same does not change by the time the tours begin, we will either provide breakfast or the groups will be taken to an Indian / local restaurant for breakfast.

Coaches

- Most of your journey in Europe is by coach and hence you are requested to keep the coach clean.
- Due to hygienic reasons, it is not permitted to use toilets on the coach. However, the tour manager will make comfort stops during long drives.
- Eating & drinking is not permitted on the coach.
- One check-in bag and one handbag per person only, due to limited boot space on the coach.
- In major European cities, there are parking restrictions for coaches, and it may not be possible to stop at all the places during the city tour. Tour Manager will try his/her best to stop coach wherever possible for a photo stop.
- Coaches are non-wheelchair compliant. There are steps to board / alight from the coach.
- Due to private coaches being forbidden inside most of the European cities, as

per EU norms to preserve them and to avoid getting them polluted and overcrowded, most of your sightseeing will be done by local buses and on foot.

Meals

- Meals are pre-set and a-la carte is not possible.
- On certain days, a packed lunch will be provided.

Sightseeing

- On certain departures, we may sometimes amend/reverse the itinerary. However, all the services / inclusions will remain the same.
- Generally, you will have to walk to sightseeing places, amusement parks and the airports sometimes for a long distance; however, the same will be timely instructed by the Tour Manager. It is advisable to carry a good pair of comfortable sports shoes. The tour manager and the driver will do their best to get you as close to the monuments as possible.

General

- On some occasions you may have to join another group in case the group does not have adequate members.
- A local representative or a driver may only be there to assist you during your initial part of the tour.
- Arrival and Departure flights should be booked according to the group flight timings. In case there is any sightseeing involved on the first or last day of the itinerary to avoid missing any of the services. Please check with your sales officer for the group flight timings.
- Security alerts and random closures might affect the itinerary.
- Please take extra care of your personal belongings while on the tour, every country you travel to is prone to thefts and bag snatching. TCIL will not be liable for any loss of belongings / baggage.
- Disabled clients should carry their own wheelchair and should be accompanied by a qualified companion who is able to provide assistance to the disabled client.
- TCIL shall not accept any liability or responsibility for any damages, loss, baggage loss, theft, injury, accident, death, breakdown or irregularity, which may occur in carrying out the tour arrangement, weather conditions, strikes, war, quarantine and any other cause whatsoever and all such loss or expense must be borne by the passengers. Insurance policies must be carried while on tour.
- The management reserves the right to claim any additional expenses incurred due to delays or changes in schedules of train, airplane, bus, ship or other services.
- The Tour Manager and the company reserves the right to amend the itinerary, alter, vary or withdraw any particular departure, excursion advertised. For the convenience of our passengers, we will sometimes amend the itinerary. However, all the services will remain the same.
- There are no refunds for any services i.e., meals, sightseeing etc. not utilized on your tour.
- All optional activities will have to be booked and paid to the Tour Manager on Day 01 of the tour. Payments to be made by cash in EURO only. (Credit or Debit cards not accepted).
- Optional tours are booked & paid on 100% non-refundable & non cancellation policy.
- The images used in this brochure are for representation purposes only.
- Please refer to the Booking Form for detailed "Terms and Conditions".